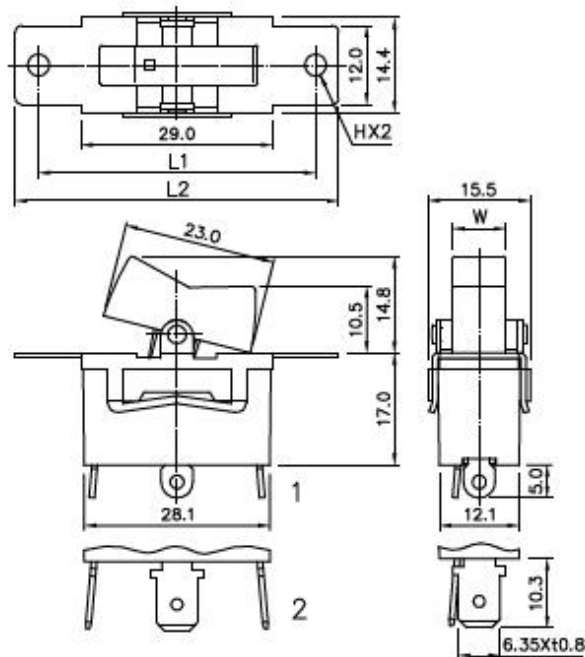




**3013  
SERIES**

## SPECIFICATION

RATING	: 15A 125VAC , 10A 250VAC
INSULATION RESISTANCE	: DC 500V 100MΩ OR MORE
CONTACT RESISTANCE	: DC 2-4V 1A 20mΩ OR LESS
WITHSTAND VOLTAGE	: AC 1500V FOR 1 Min
AMBIENT TEMPERATURE	: 0 °C TO 55 °C
ELECTRICAL LIFE	: 6,000 CYCLES





### KNOB'S TYPE

1	W=6.0 mm
2	W=8.0 mm

### BRACKET'S TYPE

1	L1=42,L2=49,H=Ø3.3
2	L1=42,L2=49,H=M3X0.5
3	L1=36,L2=43,H=M3X0.5
4	L1=43,L2=49,H=Ø3.2

### SWITCH FUNCTION

MODEL NO.			OPERATIONS	APPROVAL
3013	OFF	ON	SPST	
3013	ON	ON	SPDT	

### TERMINAL'S TYPE

1	SOLDER TERMINAL
2	QUICK TERMINAL