

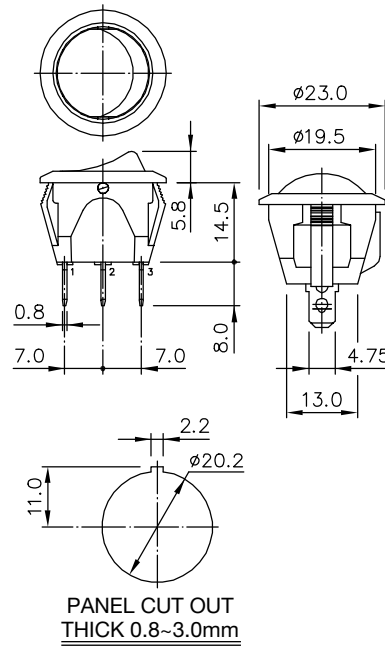
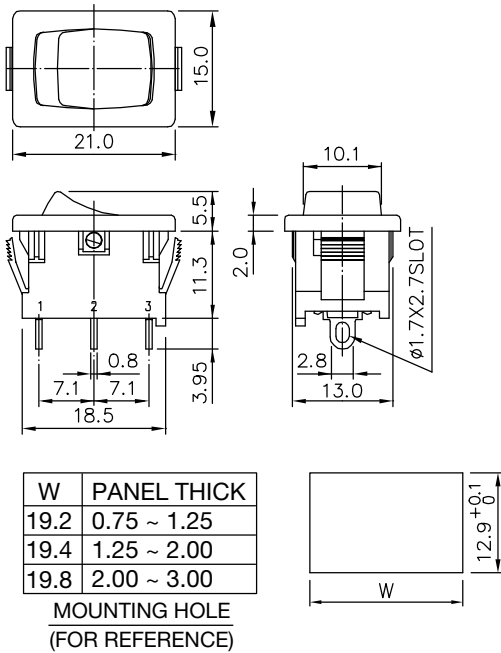


SPECIFICATION



RATING	: 15.1A 125VAC , 8A 250VAC (UL,C-UL) 1/2HP 125VAC , 1HP 250VAC (UL,C-UL) 10(4)A 250V~ T85 (ENEC)
INSULATION RESISTANCE	: DC 500V 100MΩ OR MORE
CONTACT RESISTANCE	: DC 2-4V 1A 20mΩ OR LESS
WITHSTAND VOLTAGE	: AC 1500V FOR 1 Min
AMBIENT TEMPERATURE	: 0 °C TO 85 °C
ELECTRICAL LIFE	: 10,000 CYCLES

3010 SERIES



HOW TO ORDER

3010 - □ - C1 - □ - □ - □ - □ - □ - □

PRINT		TERMINAL	RATING	CIRCUIT	BODY	KNOB COLOR	BODY COLOR
P1:	P9:	T1:3.2x10.8	G1: 10.1A 125VAC 6A 250VAC 6(4) 250~T85	C01: ON-OFF	B02:	BK: BLACK	BK: BLACK
P2:	P12:	T2:4.75x10.8	G2: 15.1A125VAC 8A250VAC 1HP250VAC 1/2HP125VAC 10(4) 250V~T85	C02: ON-ON		BU: BLUE	BU: BLUE
P3:	P13:	T6:t0.8		C03: ON-(OFF)	B05:	RD: RED	RD: RED
P4:	P14:	T8:4.75x10.8		C04: (ON)-OFF		WT: WHITE	WT: WHITE
P5:	P15:						
P6:	P16:						
P7:	P17:						
P8:	P18:						